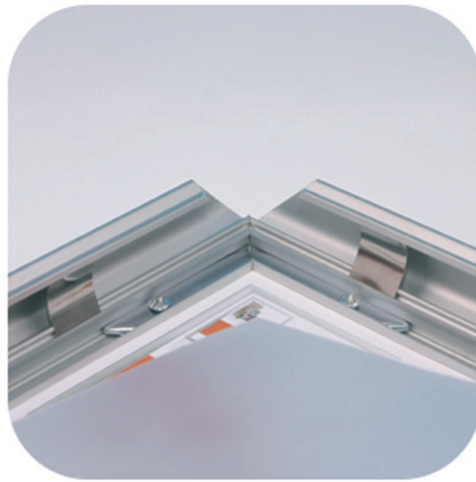




# TECHNICAL FILE

231.008.90

**POSTER COVER SHEET FOR PAVEMENT SIGNS 700X1000 MM**



# TABLE OF CONTENTS

|              |  |          |
|--------------|--|----------|
| <b>1.</b>    | <b><u>Introduction</u></b> .....           | <b>3</b> |
| <b>1.1</b>   | <b><u>Manufacturer details</u></b> .....   | <b>3</b> |
| <b>1.2</b>   | <b><u>Product details</u></b> .....        | <b>3</b> |
| <b>1.3</b>   | <b><u>Product specifications</u></b> ..... | <b>3</b> |
| <b>2.</b>    | <b><u>Internal risk analysis</u></b> ..... | <b>4</b> |
| <b>3.</b>    | <b><u>Product artwork</u></b> .....        | <b>4</b> |
| <b>3.1</b>   | <b><u>product sticker</u></b> .....        | <b>4</b> |
| <b>3.2</b>   | <b><u>product packaging</u></b> .....      | <b>4</b> |
| <b>4.</b>    | <b><u>Applicable norms</u></b> .....       | <b>5</b> |
| <b>5.</b>    | <b><u>Modifications</u></b> .....          | <b>5</b> |
| <b>6.</b>    | <b><u>Complaints and issues</u></b> .....  | <b>5</b> |
| <b>7.</b>    | <b><u>Declarations</u></b> .....           | <b>6</b> |
| <b>7.1</b>   | <b><u>Reach declaration</u></b> .....      | <b>6</b> |
| <b>7.2</b>   | <b><u>Packaging declaration</u></b> .....  | <b>7</b> |
| <b>ANNEX</b> | .....                                      | <b>8</b> |
| <b>I.</b>    | <b><u>Datasheet PMMA XT</u></b> .....      | <b>8</b> |

## 1.1 MANUFACTURER DETAILS

|                        |  |
|------------------------|--|
| <b>Company name</b>    | Nedco B.V.   |
| <b>Company address</b> | 's Gravenweg 346<br>2911BK Nieuwerkerk aan den IJssel<br>The Netherlands |
| <b>Email</b>           | info@nedco.nl  |
| <b>Telephone</b>       | +31 (0)180 317 199   |

## 1.2 PRODUCT DETAILS

|                     |   |
|---------------------|---|
| <b>Product code</b> | 231.008.90  |
| <b>Product name</b> | Poster cover sheet for pavement signs 700x1000 mm |
| <b>Responsible</b>  | Data management Nedco B.V.                        |
| <b>Version date</b> | 7-1-2025  |

## 1.3 PRODUCT SPECIFICATIONS

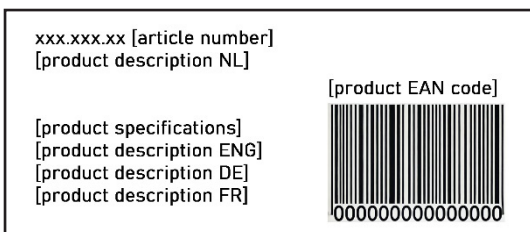
|                         |  |
|-------------------------|--|
| <b>Description</b>      | Use this poster cover sheet to protect the poster in your pavement sign. The cover is made of anti-reflective PVC and is 0.5 mm thick. Format 700x1000 mm. |
| <b>Intended use</b>     | Use this poster cover sheet to protect the poster in your pavement sign. The cover is made of anti-reflective PVC and is 0.5 mm thick. Format 700x1000 mm. |
| <b>Colour</b>           | Transparent  |
| <b>Material</b>         | Anti-reflective PVC 0,5 mm   |
| <b>Packaging qty</b>    | n/a  |
| <b>Dimensions</b>       | 700 x 1000 mm  |
| <b>Format</b>           | 700 x 1000 mm  |
| <b>Type</b>             | n/a  |
| <b>Inner dimension</b>  | n/a  |
| <b>Outer dimensions</b> | n/a  |
| <b>Filling depth</b>    | n/a  |
| <b>EAN</b>              | 8,71351E+12  |

## 2. INTERNAL RISK ANALYSIS

| Risk ID | Potential risk                  | Description  | Likelihood (1-5) | Severity (1-5) | Risk level  | Mitigation*   |
|---------|---------------------------------|--|------------------|----------------|-------------|---|
| 1       | Sharp edges                     | The edges of the acrylate material could be sharp, causing cuts to users during handling or assembly.        | 1                | 4              | Low(4)      | Implemented round edges in design.                          |
| 2       | Fire hazard                     | Acrylate is flammable, and if exposed to open flames or high heat, it could pose a fire hazard.              | 1                | 4              | Low(4)      | Product is very unlikely to be placed near sources of fire. |
| 3       | Exposure to harmful chemicals   | Acrylate may contain additives or chemicals that are harmful.  | 2                | 4              | Moderate(8) | Tested for the absence of hazardous substances.             |
| 4       | Allergic reactions to materials | Some users may have skin allergies or sensitivities to chemicals used in the acrylate manufacturing process. | 1                | 2              | Low(2)      | Tested for allergens.                                       |

\* how to counter the hazard

### 3.1 PRODUCT STICKER



### 3.2 PRODUCT PACKAGING



## 4. APPLICABLE **NORMS**

| <b>Regulation</b>            | <b>Description</b>                       |
|------------------------------|--|
| Regulation (EU) No 1907/2006 | REACH - Chemical substances              |
| Directive (EU) 94/62/EC      | Packaging materials and waste            |
| Regulation (EU) 2023/988     | GPSR - General product safety regulation |

## 5. **MODIFICATION**

| <b>Date</b> | <b>Issue</b> | <b>Mitigation</b> |
|-------------|--------------|-------------------|
|             |              |                   |
|             |              |                   |
|             |              |                   |
|             |              |                   |

## 6. COMPLAINTS AND **ISSUES**

| <b>Date</b> | <b>Issue</b> | <b>Mitigation</b> |
|-------------|--------------|-------------------|
|             |              |                   |
|             |              |                   |
|             |              |                   |
|             |              |                   |

## 7.1 REACH **DECLARATION**

**Nedco B.V.** confirms that all products imported into the EU comply with the REACH Regulation (EC) No 1907/2006.

Products Covered:

**231.008.90 Poster cover sheet for pavement signs 700x1000 mm**

Compliance Responsibilities:

- Registration: Substances in our products imported in quantities of one tonne or more per year are registered with ECHA.
- Evaluation: We cooperate with ECHA for substance evaluation.
- Authorisation: We ensure authorisation for substances requiring it or use suitable alternatives.
- Restrictions: We comply with restrictions on SVHCs and other restricted substances.
- Communication: Safety information is provided to the supply chain, including SDS and SVHC details.
- Substances of Very High Concern (SVHC): We monitor the ECHA candidate list and communicate SVHCs present above 0.1% w/w in our products.

We affirm our commitment to REACH compliance, ensuring our products meet regulatory standards.

Signature:



J. Nederlof

## 7.2 PACKAGING DECLARATION

**Nedco B.V.** declares that all packaging materials used in our products comply with the requirements of the European Parliament and Council Directive 94/62/EC on Packaging and Packaging Waste, and its amendments.

Scope of Declaration:

This declaration covers all packaging materials used in the following products imported or manufactured by before mentioned company:

### **231.008.90 Poster cover sheet for pavement signs 700x1000 mm**

Compliance Responsibilities:

- **Material Composition:** Our packaging materials are designed to ensure that the heavy metal content (lead, cadmium, mercury, and hexavalent chromium) does not exceed the limit of 100 ppm by weight.
- **Recyclability:** We ensure that our packaging is designed to facilitate recycling, recovery, and reuse, meeting the essential requirements outlined in Directive 94/62/EC.
- **Reduction of Packaging Waste:** Efforts are made to reduce the weight and volume of packaging to the minimum necessary to maintain product safety and hygiene.
- **Environmental Impact:** Our packaging materials are selected and manufactured to minimize their environmental impact during production, usage, and disposal.
- **Recycling and Recovery:** We comply with national schemes for the return, collection, and recovery of packaging waste, ensuring that our packaging materials contribute to the targets set for recycling and recovery.

By signing this declaration, we affirm our commitment to meeting the requirements of Directive 94/62/EC on Packaging and Packaging Waste. We are dedicated to ensuring that our packaging materials are environmentally friendly and compliant with all regulatory standards.

Signature:



J. NEDERLOF

J. Nederlof

# ANNEX I.

Datasheets and certificates are available at [www.nedco.nl/downloads](http://www.nedco.nl/downloads)